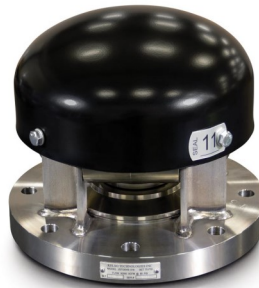




General Purpose Tank Car Kit

PRESSURE RELIEF VALVE

- Unique constant-force spring technology
- Low profile external design
- Valve parts protected from commodity
- Field repair or replacement
- High or low flow capacity
- Debris screen, teflon coating & nickel plating options



PRV Specifications

Flange: 3, 4 or 8-bolt
Interface: flat, tongue & groove or raised
Material: carbon or stainless
PSI: 75 or 165

VACUUM RELIEF VALVE

- Unique constant-force spring technology
- Flat gasket seal eliminates O-rings
- Seal welded stem increases longevity
- Valve components protected from commodity
- Optional baffle
- Stainless steel construction



VRV Specifications

PSI: 4.5, 3 or 1.5 (vacuum)
Height: 5.33"
Flange thickness: 0.625"
Connection: flanged & threaded

BOTTOM OUTLET VALVE

- Unique ceramic ball/wiper technology
- Withstands extreme temperatures & corrosion
- Easy-turn handle is AAR approved
- Stainless steel or carbon body
- Standard or low profile
- Steam jacket option
- CW and CCW handle actuation



BOV Specifications

Max PSI: 275
Temperature: 400° to -40°
Height: 5.41"
Flange thickness: 0.94"
Port: 4" (full)

TOP BALL VALVE

- Ceramic or stainless steel ball
- Ceramic wiper design extends seat life
- Universal TFM-PTFE seats
- Cast and non-cast options



TBV Specifications

Material: carbon or stainless
Ball: ceramic or stainless
Wiper: ceramic
Size: 2" or 3"

ONE-BOLT MANWAY

- Eliminates eye-bolt leaks and NARs
- Gasket replacement is significantly reduced
- 5 minute open/close adds loading efficiency
- Enhanced worker safety features
- Modifiers available



Manway Specifications

Nozzle length: 5 3/8" to 15"
Material: carbon or stainless
Closure: one-bolt
Loading: Kelso universal adapter

Installation manuals available online or by request.